



**YOUR
COFFEE
EXPERIENCE**

EUREKA ESPRESSO MACHINES

FROM THE GRIND
TO THE CUP



www.eureka.co.it

Complete your coffee experience

Complete your **coffee
experience** and **match
them with your Mignon**,
making **your coffee
corner unique**.



PURA

Get inspired by tradition and manual skills with our Pura.

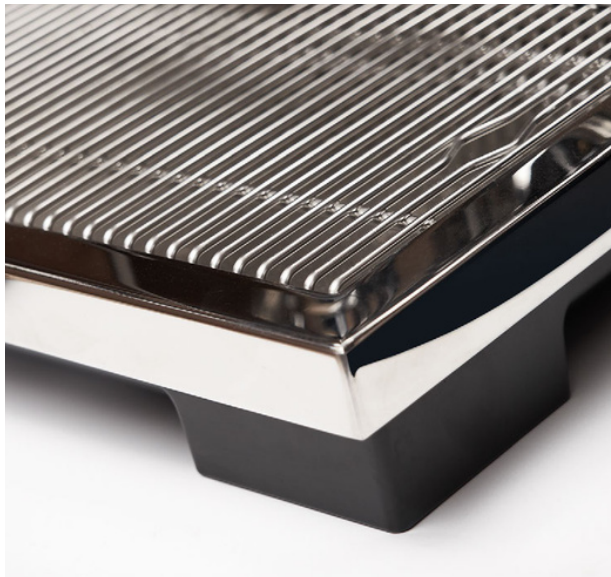
Elegant and Modern Design

Pura is a combination of **aesthetics** and **functionality**. **100% stainless steel body**, its **elaborate finishes**, fits perfectly any kitchen. With a **minimalist look** and **clean lines**, Pura is designed by **Studio Paoli Milano** to **perfectly match your home**.

Barista-Friend

Design to make the Espresso experience **comfortable** and **unique**, thanks to the combination of **heat exchanger technology** and a **total manual control of the machine**.

- **No setting required:** unbox, warm up and be ready to extract.
- **Total manual control** for steam, water and coffee extraction, to feel like a **professional barista**.
- **Fast warm up:** the machine is ready to brew in only 12-15 minutes.
- **Total cool touch technology**, to provide a safer and more comfortable use of both wands.
- **Premium quality**, stainless steel boiler.
- **Extractable water tank** (2 lt capacity) easy to remove thanks to the **comfortable flaps**. Horizontal removal, without tilting it, **preventing water from falling outside**. Easy to clean.
- **Capacious Drip Tray** (1 lt), which allows a **large autonomy in coffee preparation**.
- **E61 Group**, for the best coffee quality.
- **Elaborately manufactured stainless steel body**, with a 100% metal base, for unparalleled stability and robustness.



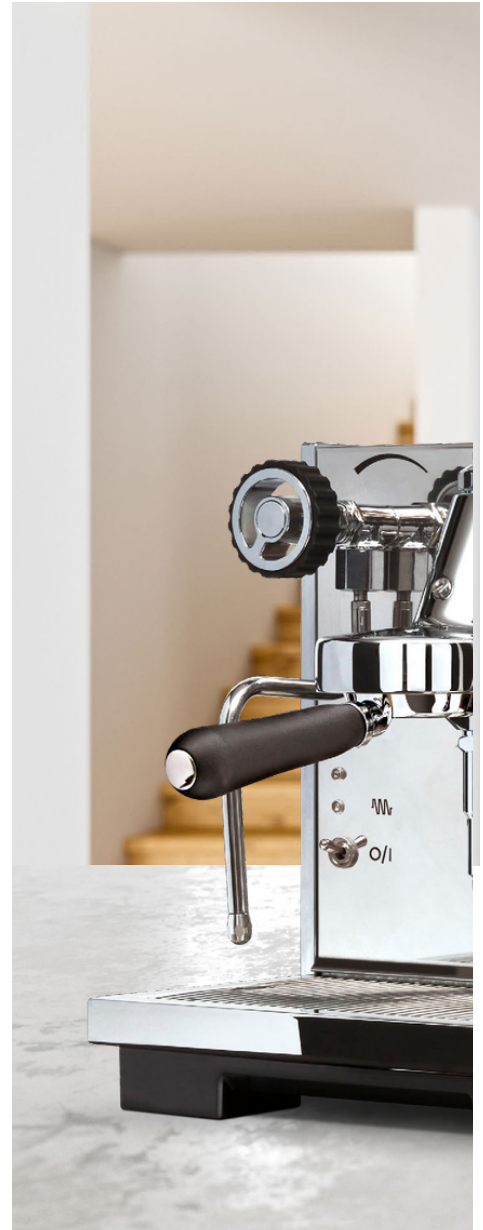


PURA R

Enjoy the silence for your coffee break

Thanks to the last generation rotatory pump, Pura R makes your coffee break comfortable and quiet.

Thanks to the minimal pressure fluctuations of the rotary pump system, the extraction of your coffee will remain **extremely stable**. Your coffee will be perfect!





COSTANZA

For the most demanding Baristas

Designed to make the Espresso experience customizable and unique.

Display with PID control

- **Temperature control**, provided by PID-control, it is possible to choose among 3 temperature levels. According to the coffee and the individual preferences.
- **Weekly activation program** allowing to schedule the switch-on time on all days of the week to get the machine always ready and avoid time loss.
- **Dose counter**, to be always aware and monitor the total number of shots.
- **Shot timer**, to achieve greater precision during coffee extraction.
- **Eco mode**, to save energy and make the machine always ready to go thank to heat retaining.



Feel like a professional Barista

- **No setting required:** unbox, warm up and be ready to extract.
- **Total manual control for steam, water and coffee extraction,** to feel like a professional barista.
- **Fast warm up:** the machine is ready to brew in only **12-15 minutes**. The inclination of the filter holder follows the natural posture of the barista, ensuring comfort.
- **Total cool touch technology,** to provide a safer and more comfortable use of both wands.



- **Extractable water tank** (2 lt capacity) easy to remove thanks to the **comfortable flaps**. Horizontal removal, without tilting it, **preventing water from falling outside**. Easy to clean.
- **Capacious Drip Tray** (1 lt), which allows a **large autonomy in coffee preparation**.
- **E61 Group**, for the best coffee quality.
- **Elaborately manufactured stainless steel body**, with a 100% metal base, for unparalleled stability and robustness.

Designed by Studio Paoli Milano.

COSTANZA R

Top quality, for your Coffee Experience

Customize your Coffee Extraction, and enjoy professional, café-style espresso at home.

- Display with PID control, for a customised user experience
- Last generation rotary pump





CUSTOM VERSION

Customize your Coffee Experience

Choose Eureka Espresso machine with a unique and customized touch thanks to our special panels.



white



red



black



walnut



oak



olive

Add a touch of personality to your coffee corner with the **CUSTOM VERSION coffee machine**! Now you can customize the look of your machine by choosing from a variety of wood and colour configurations.

Add a unique touch to your coffee machine, and create the perfect atmosphere for your coffee corner. **Change style according to your mood!**

Make up your custom!

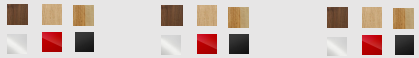

- 1) choose the model suitable for you*
- 2) customize it with your favourite panels



*Custom versions: available for Pura R, Costanza and Costanza R



Comparative table

	PURA	PURA R	COSTANZA	COSTANZA R
Pressure Profile	Vibration	Rotary	Vibration	Rotary
PID System	no		yes	
Water Feed	Tank, Plumbable as optional		Tank	Tank, Plumbable as optional
Power absorbed	1250 W			
Brew group	Filter Holder		58 mm	
	Diameter Pre-infusion		yes	
	Group typology		E61	
Boiler	Capacity [lt]		1.5	
	Material		Stainless Steel	
	thermal insulation		yes	
Tank	Capacity [lt]		2	
Pressure gauge	yes		no	
Drip Tray capacity [lt]	1			
Dimension	Height		337 mm	
	Width		300.5 mm	
	Depth		444.5 mm	
	Weight		34 kg	
Warm Up	Fast (12-15 min.)			
Materials	Body		Stainless Steel	
	Base		Stainless Steel	
Display	Weekly program	no	yes	
	Shot Timer	no	yes	
	Temperature control	no	yes	
	Pre infusion indicator	no	yes	
	Eco Mode	no	yes	
Reserve mode	yes (light indicator)		yes (light indicator)	
OPV (Output Pressure Valve)	9 bar			
Accessories	Double filter holder, Blind filter, Anti-burn rubber sleeves			
Custom Version	no	yes	yes	yes
Wooden panels				
Colors panels				



**YOUR COFFEE
EXPERIENCE**

Conti Valerio Srl
via Luigi Longo, 39/41
50019 Sesto Fiorentino (FI) Italy
tel. +39 055 4200011
fax +39 055 4200010

info@eureka.co.it
www.eureka.co.it